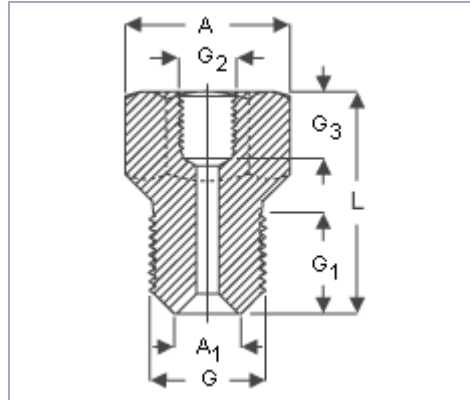


Connection nipples with pipe threads (G)

Application

For connecting oil injection equipment to a pressure joint with different threads. Maximum working pressure: 300 MPa (43,500 psi). All nipples with an E suffix have a maximum working pressure of 400 MPa (58,000 psi)



Technical data

Designation	Dimensions																
	G	G ₂	A		A ₁		G ₁		G ₃		L		Across Flats		Weight		
-	inch	inch	mm	inch	mm	inch	mm	inch	mm	inch	mm	inch	mm	inch	mm	kg	lb
1077456	M 8	M 6	11	0.43	5	0.20	15	0.59	9	0.35	33	1.30	10	0.39	0,05	0.11	
1077455	G 1/8	M 6	11	0.43	7	0.28	15	0.59	9	0.35	33	1.30	10	0.39	0,05	0.11	
1014357 A	G 1/8	G 1/4	25,4	1.00	7	0.28	15	0.59	15	0.59	43	1.69	22	0.87	0,06	0.13	
1009030 B	G 1/8	G 3/8	25,4	1.00	7	0.28	15	0.59	15	0.59	42	1.65	22	0.87	0,06	0.13	
1019950	G 1/8	G 1/2	36,9	1.45	7	0.28	15	0.59	14	0.55	50	1.97	32	1.26	0,14	0.31	
1018219 E	G 1/4	G 3/8	25,4	1.00	9,5	0.37	17	0.67	15	0.59	45	1.77	22	0.87	0,07	0.15	
1009030 E	G 1/4	G 3/4	36,9	1.45	9,5	0.37	17	0.67	20	0.79	54	2.13	32	1.26	0,13	0.29	
1012783 E	G 3/8	G 1/4	25,4	1.00	10	0.39	17	0.67	15	0.59	43	1.69	22	0.87	0,08	0.18	
1008593 E	G 3/8	G 3/4	36,9	1.45	10	0.39	17	0.67	20	0.79	53	2.09	32	1.26	0,15	0.33	
1016402 E	G 1/2	G 1/4	25,4	1.00	14	0.55	20	0.79	15	0.59	43	1.69	22	0.87	0,10	0.22	
729146	G 1/2	G 3/4	36,9	1.45	-	-	17	0.67	20	0.79	50	1.97	32	1.26	0,18	0.40	
228027 E	G 3/4	G 1/4	36,9	1.45	15	0.59	22	0.87	15	0.59	50	1.97	32	1.26	0,25	0.55	

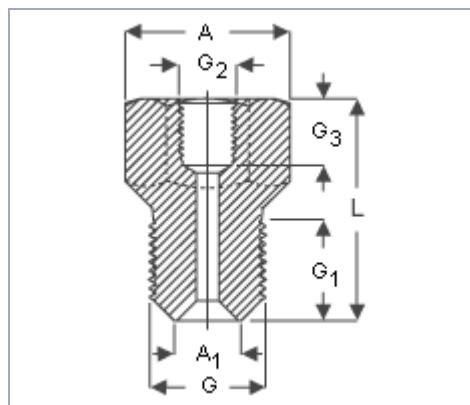
Maximum working pressure: 300 MPa (43,500 psi).

All nipples with an E suffix have a maximum working pressure of 400 MPa (58,000 psi)

Connection nipples with tapered threads (NPT) and pipe threads (G)

Application

For connecting oil injection equipment to a pressure joint with tapered thread (NPT) and for connecting NPT threads to G threads. Maximum pressure: 300 MPa (43,500 psi).



Technical data

Designation	Dimensions														
	G	G ₂	A		G ₁		G ₃		L		Across Flats		Weight		
-	inch	inch	mm	inch	mm	inch	mm	inch	mm	inch	mm	inch	mm	kg	lb
729654	NPT 1/4	G 1/4	25,4	1.00	15	0.59	15	0.59	42	1.65	22	0.87	0,25	0.55	
729653	NPT 3/8	G 1/4	25,4	1.00	15	0.59	15	0.59	40	1.57	22	0.87	0,25	0.55	
729106	G 1/4	NPT 3/8	25,4	1.00	17	0.67	19	0.75	50	1.97	32	1.26	0,16	0.35	

ЗАО «БЕРГ АБ», (495) 727-22-72, promshop-biz@ya.ru, www.promshop.biz

