

Application

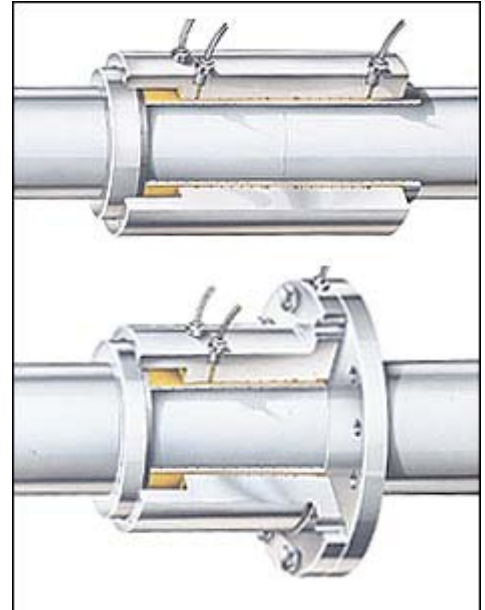
SKF OK couplings use the SKF oil injection method to join two shaft together. The principle is to press two conical sleeves together on top of the shaft ends, while an oil film eliminates metallic contacts between the two surfaces. The result is a joint with very high torque capacity which can be easily mounted and dismantled.

For more details please contact [SKF Coupling Systems AB](#).

The SKF mounting kits offer a complete solution to mount or dismount SKF OK couplings.

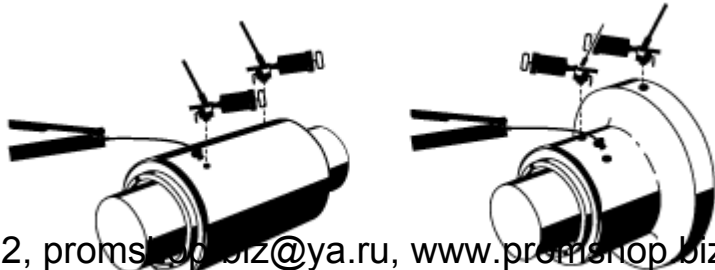
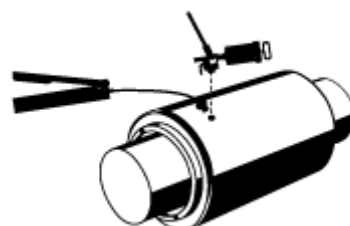
Description

Every set has been designed with a particular series of OK couplings in mind. They can be combined with other accessories from the SKF hydraulic tool program (e.g. pressure gauges, adaptor blocks, high pressure pipes, etc.)



Technical data and selection chart

Coupling size	Designation	Contents	Weight
OKC 25- OKC 90	TMHK 35	1 x TMJE 300-1 Oil injector set 1 x 729944 E Plug 1 x 227958A Pressure pipe (for OKC 80 and 90) 1 x 729123A/2000 Pressure pipe (for OKC 25-75) Tools and storage case	13,8 kg (30.4 lb)
OKC 100-OKC 170 OKCS 178 -OKCS 360	TMHK 36	1 x 226400 Injector with spares 1 x TMJL 50 Hydraulic pump Tools and storage case	19 kg (41.8 lb)
OKC 180-OKC 250 OKF 100-OKF 300 <i>* = for use with OKF couplings</i>	TMHK 37	2 x 226400 Injector with spares 1 x 226402 * Adapter block 1 x 227958A * High pressure pipe 1 x TMJL 50 Hydraulic pump Tools and storage case	28,1 kg (61.8 lb)

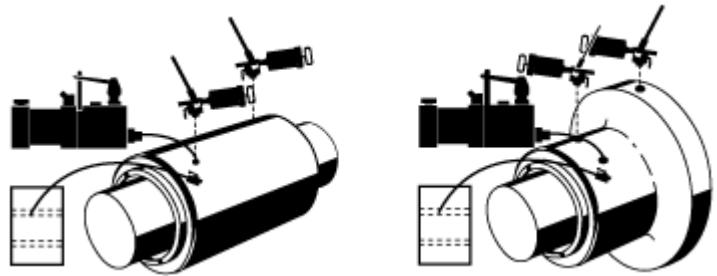


OKC 100-OKC 160
OKF 300-OKF 700
Shipboard or infrequent use

3АО «БЕРГ АБ», (495) 727-22-72, promshop-biz@ya.ru, www.promshop.biz

1 x THAP 030/SET Air-driven pump
1 x 729147A Return hose
2 x 226400 Injector with spares
Tools and storage case

(70.6 lb)

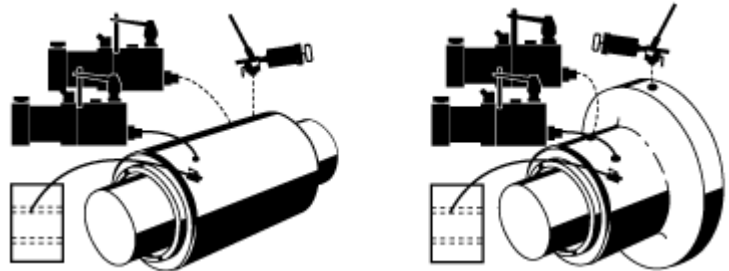


OKC 180-OKC 490
OKF 300-OKF 700
Shipyard or frequent use

TMHK 38S

1 x THAP 030/SET Air-driven pump
1 x 729147A Return hose
1 x THAP 300E Air-driven pump
1 x 226400 Injector with spares

78,2 kg
(172.3 lb)

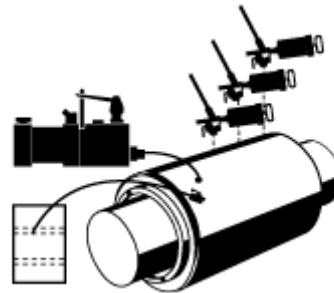


OKC 500 - OKC 600
Shipboard or infrequent use

TMHK 39

1 x THAP 030/SET Air-driven pump
1 x 729147A Return hose
3 x 226400 Injector with spares

35,1 kg
(77.2 lb)

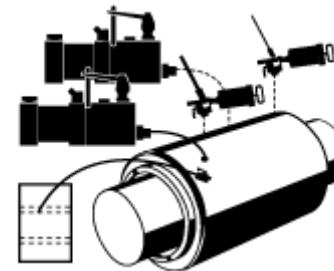


OKC 500 and larger
Shipboard or infrequent use

TMHK 40

1 x THAP 030/SET Air-driven pump
1 x THAP 300E Air-driven pump
1 x 729147A Return hose
2 x 226400 Injector with spares

80,2 kg
(176.7 lb)

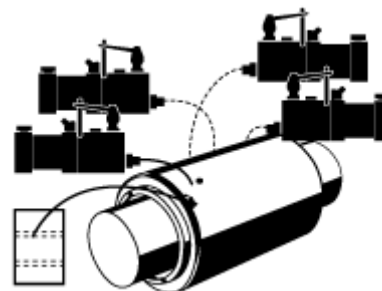


OKC 500 and larger
Shipyard or frequent use

TMHK 41

1 x THAP 030/SET Air-driven pump
3 x THAP 300E Air-driven pump
1 x 729147A Return hose

132,7 kg
(293.3 lb)



3АО «БЕРГ АБ», (495) 727-22-72, promshop-biz@ya.ru, www.promshop.biz

